



# ACE



**LANDSCAPE SERVICES  
PTY LTD**

**Ace Contractors  
Group Pty Ltd**  
[www.acecon.com.au](http://www.acecon.com.au)

# ACE CONTRACTORS GROUP PTY LTD

Ace Contractors Group is a collection of companies providing a diverse portfolio of services to clients since 1971. These services include civil, infrastructure, landscaping, electrical, environmental, equipment and water. We have the ability to combine our services to offer our clients an integrated service that mitigates interface risks.



## Infrastructure Pty Ltd

Design and construction of works for statutory authorities such as VicRoads, V/Line, PTV, VicTrack, councils and Department of Defence. Infrastructure projects include roads, bridges, shared paths, public open spaces, and bus/tram/rail infrastructure.



## Landscape Services Pty Ltd

Construction and maintenance of major landscape projects, including commercial developments, municipal parks and gardens, sporting facilities, streetscapes and plazas, and landscape works associated with public infrastructure.



## Environmental Services Pty Ltd

Operation of waste transfer stations, active landfill disposal sites, and resource recovery facilities, landfill cell and leachate pond development, soil remediation, asbestos removal, and general environmental services to residential, industrial, municipal and commercial customers.



## Civil Services Pty Ltd

Earthworks and civil services are associated with the construction of major roads, significant commercial and industrial developments, schools, universities, hospitals, defence sites, and correctional facilities, for example. ACE's scope is delivered via subcontract to construction companies due to the large scale of the projects. Scope elements include, but are not limited to earthworks, roads, footpaths, drainage, car parks and lighting.



## Electrical Infrastructure Pty Ltd

Design, manufacture, installation, servicing and commissioning of switchboards, which includes motor control centres, high voltage switchboards, substations, PLC, control and SCADA systems. They also support other ACE companies with general electrical works and public lighting.



## Water Services Pty Ltd

Design, manufacture and construction of water and wastewater infrastructure for water authorities. Works include pump stations, treatment facilities, water storage, channels, regulators, and meters.



## Equipment Services Pty Ltd

Hire of construction plant and equipment. ACE Contractors Group has a modern fleet of GPS/LPS controlled earthmoving plant (excavators, dozers and graders).





## ACE LANDSCAPE SERVICES PTY LTD

Ace Group has been delivering landscaping projects for more than 15 years. Recognising a marketplace opportunity and a complimentary service offering to our established civil and infrastructure services, the landscaping division became an independent company in 2011. Ace Landscape Services has delivered multiple high profile projects which have significantly transformed and upgraded commercial landscapes, streetscapes and community hubs throughout Victoria.

Ace Landscape Services extensive scope of works and capabilities include:

- ▶ Commercial and Residential
- ▶ Sports Ovals and Sporting Pavilions
- ▶ Parks, Playgrounds and Community spaces
- ▶ Streetscapes and Boulevards
- ▶ Wetlands and Open Spaces
- ▶ Fully Automatic Irrigation Systems
- ▶ Landscape Design and Construction
- ▶ Maintenance
- ▶ Podium Landscaping

Our team operates across a diverse spectrum of projects. These range from the industrially challenging works related to large scale commercial projects, to the more technically challenging streetscape projects for large statutory and municipal clients. Statutory and municipal clients often require stakeholder engagement, making communication and planning paramount.

The ACE Landscape division usually works in the public domain on projects with an emotional connection to the community. The ACE Landscape team is particularly proud of the projects which reflect their capabilities, more notably their work on the iconic Penguin Parade redevelopment. This historic project saw ACE Contractors awarded with the Kane Sub Contractor of the Year 2019 award due to the quality of our services and our ability to bring a project in on time.

Ace Landscape works in conjunction with our Civil and Infrastructure divisions to offer a 'one-stop-shop' for external works. Our ability to integrate our services results in clients being able to avoid problems typically associated with the contract interface between the two disciplines. Our strengths come from the high level of standards, systems and processes, along with our long-standing presence throughout the industry.







## IN SAFE HANDS

ACE works within a highly regulated environment, meeting international and national standards. Additionally most clients have their own stringent specifications and requirements that ACE must meet. ACE is compliant with the Building Code 2016 and Fair Work Act 2009. We are members of the Master Builders Association, the Civil Contractors Federation and Landscaping Victoria.

ACE Infrastructure has VicRoads prequalification for civil (road and bridge) construction (R3, B2, TGS and TMP) to financial level F75, for projects up to the value of \$50M. We have reciprocal prequalification in most states (Vic, NSW, ACT, Qld, SA and WA), under the national prequalification system.

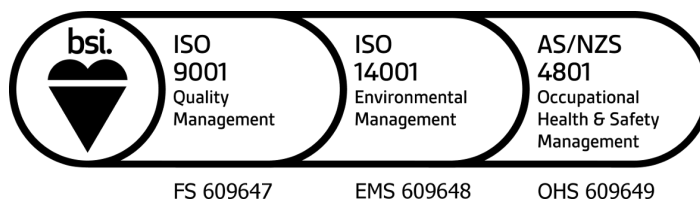
Many of our staff (PDs, PMs, PEs, Supervisors, foremen) are rail industry trained and experienced, and have up to date Rail Industry Worker (RIW) cards. Ace has completed a significant training schedule to ensure sufficient resources are available.

ACE Electrical Infrastructure is a certified electrical contractor in Victoria, NSW, QLD and Tasmania. We also have accreditation with the Victorian Electrical Distribution Network (VEDN). ACE is prequalified to work on Essential Energy's assets in NSW and Queensland, and CitiPower Powercor's assets in Victoria. We are also prequalified to undertake public lighting works on the VicRoads' network.

These accreditations underpin our ability to tackle the most technically complex and commercially demanding projects safely, to a high standard and with a strong level of project management consistency.

We have an integrated management system accredited to the following standards:

- ▶ Australian Government Building and Construction WHS Accreditation Scheme, accredited by the Office of the Federal Safety Commissioner
- ▶ Occupational Health and Safety Management (AS/NZS 4801)
- ▶ Environmental Management (ISO 14001)
- ▶ Quality Management (ISO 9001)







## **Project Experience**



## VICTORIAN NEW SCHOOLS PPP – CIVIL & LANDSCAPING WORKS

### Watpac Construction



**VIC**



**14.8M**

Watpac, as part of the Learning Communities Victoria consortium, delivered the \$291M New Schools Project PPP for the Victorian State Government. The consortium built, and will maintain, 15 government schools across Victoria, including primary, secondary and special schools, in addition to some community facilities. The schools are located in the state's fastest growing areas.

Each of the new schools functions as a community hub, opening up access to a range of facilities for local families. The project provides gyms, swimming pools, meeting spaces, adult learning spaces, and childcare facilities alongside world-class school facilities.

Ace delivered landscape construction at the following schools:

#### Point Cook P9 School



- ▶ 20,000 m3 bulk earthworks
- ▶ 6,000 m2 concrete footpaths
- ▶ 1,500 m2 asphalt footpaths
- ▶ 2 x 1000 m2 carparks
- ▶ 2 x 1,200 m2 asphalt flexipave basketball courts
- ▶ 1 full size oval
- ▶ 875 m2 softfall play areas
- ▶ Sunken sand pits
- ▶ 1 amphitheatre
- ▶ 2km in-ground drainage
- ▶ Irrigation
- ▶ 24,000 m2 grass and turf
- ▶ \$240,000 planting
- ▶ Intricate landscaping

#### Mernda Central P12 School



- ▶ 100,000 m3 bulk earthworks
- ▶ 10,000 m2 concrete footpaths
- ▶ 4,000 m2 asphalt footpaths
- ▶ 4 x 1000 m2 carparks
- ▶ 3 x 1,200 m2 asphalt flexipave basketball courts
- ▶ 1 full size oval
- ▶ 1 full size soccer pitch
- ▶ 60,000 m2 grass and turf
- ▶ 1,000 m2 softfall play areas
- ▶ Sunken sand pits
- ▶ 1,000 m2 amphitheater
- ▶ Intricate landscaping
- ▶ \$200,000 tree planting
- ▶ 4.5km in-ground drainage
- ▶ Irrigation

#### Casey Central School



- ▶ 15,000 m3 bulk earthworks
- ▶ 4,000 m2 concrete - asphalt footpaths and LD concrete
- ▶ 1500 m2 carparks
- ▶ 1500 m2 asphalt flexipave basketball courts
- ▶ 1 full size oval
- ▶ 1 full size soccer pitch
- ▶ 12,000 m2 grass and turf
- ▶ 1,000 m2 softfall play areas
- ▶ Sunken sand pits
- ▶ Intricate landscaping
- ▶ \$100,000 tree planting
- ▶ 1000 m in-ground drainage
- ▶ Irrigation

## PENGUIN PARADE VISITORS CENTRE

## KANE CONSTRUCTIONS



10M

**Phillip Island,  
VIC**

The ACE Landscaping and Civil Sectors played an integral role in the 6.7 Hectare redevelopment of Phillip Island's iconic Penguin Parade. The primary guiding principle during the construction phase was to ensure the existing penguin habitat was protected during the restoration. ACE worked cooperatively throughout the project with the builder Kane Constructions and Nature Parks to ensure that we followed the Construction Environmental Management Plan (CEMP) to help ensure impact on the penguins and other wildlife was mitigated during construction.

The ACE Landscape team also constructed the burrows underneath the new tourist building and throughout the newly restored penguin habitat. In addition to the burrow and habitat works, the ACE Landscape team also constructed over 900m<sup>2</sup> of multi-tiered timber decking and seating as well as the exposed concrete and bluestone pathways that lead to the newly constructed tourist building.

Scope of works for the landscape contract included:

- ▶ Concrete footpaths
- ▶ Soft and hard landscaping
- ▶ Swales
- ▶ Paving
- ▶ Fencing
- ▶ Maintenance (52 weeks)
- ▶ Timber decking



## MONASH UNIVERSITY – CAULFIELD

## MONASH UNIVERSITY



8.8M

Caulfield,  
VIC

As head contractor, ACE undertook the following two packages:

### 1. Monash Caulfield MADA East Landscaping:

Revitalisation of the Monash Art Design & Architecture (MADA) East courtyard, and a shared space between the D & E Fine Arts faculty buildings at the Caulfield Campus.

ACE's scope includes:

- ▶ Demolition
- ▶ Drainage works
- ▶ Construction of pavements
- ▶ Electrical and lighting works
- ▶ Soft landscaping

### 2. Monash Caulfield Queens Avenue Landscaping:

The scope consisted of 4 combined landscape and civil packages, from 3 separate landscape architects and civil and electrical consultants, providing upgrades to Queens Avenue thoroughfare and surrounding courtyards and walkways.

Works include:

- ▶ Demolition
- ▶ Drainage works
- ▶ Earthworks
- ▶ Insitu concrete
- ▶ Pavements
- ▶ Timber works
- ▶ Electrical and lighting
- ▶ Installation of furniture and signage
- ▶ Soft landscaping



## BENDIGO BOTANIC GARDENS – GARDEN FOR THE FUTURE

### CITY OF GREATER BENDIGO



4M



**White Hills,  
VIC**

The City of Greater Bendigo expanded their Botanic Gardens. The Garden for the Future included a 2 hectare extension of the Botanic Gardens, which provided an inspiring and sustainable iconic landscape that offers diverse opportunities for learning about plants, horticulture, landscapes, botany, ecology, conservation and heritage. It is a place to be enjoyed by the whole of the community.

As head contractor for the project, ACE undertook the Stage 1 construction of the Botanic Gardens.

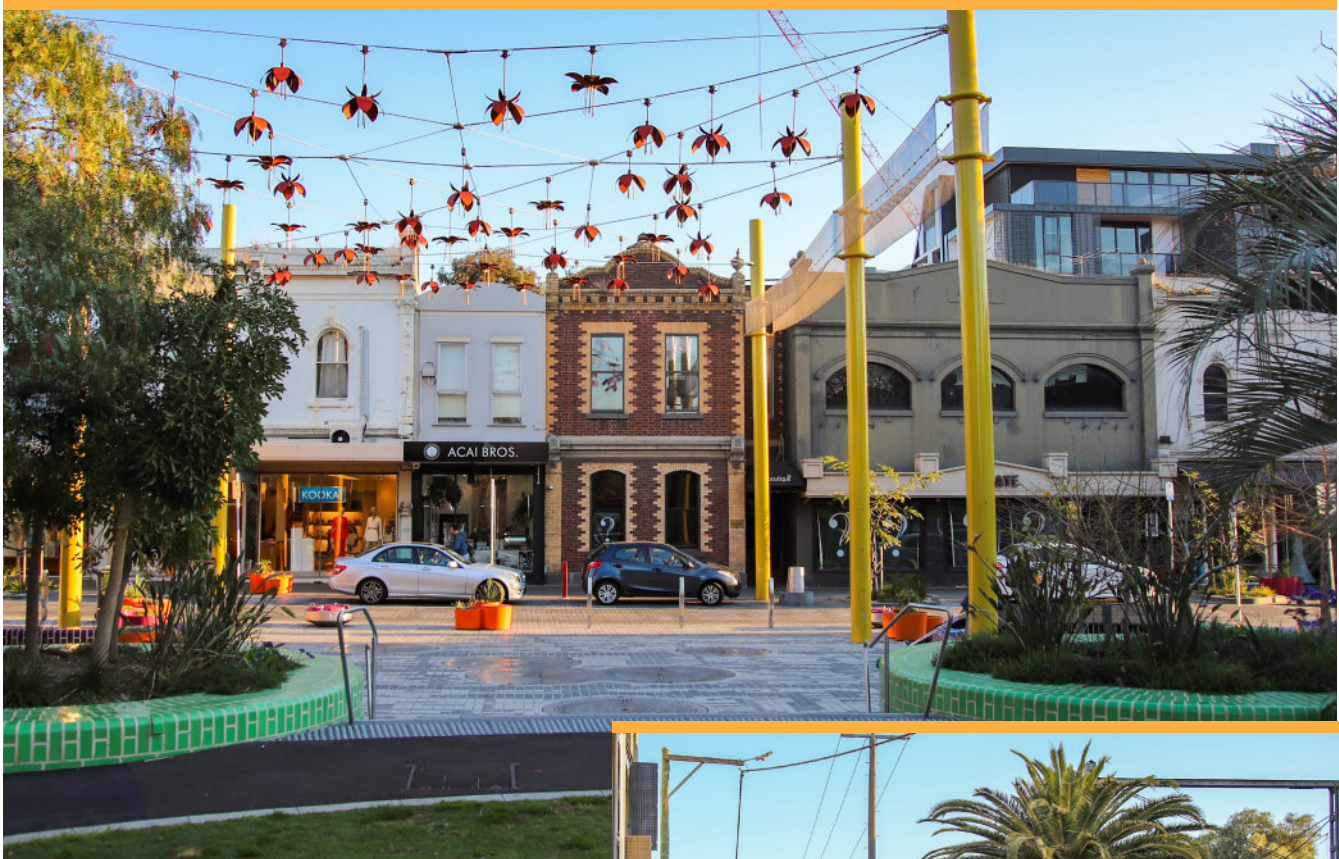
ACE's scope included:

- ▶ outreach shelter construction
- ▶ earthworks
- ▶ concrete works
- ▶ fencing
- ▶ landscaping works
- ▶ installation of feature furnishings and furniture
- ▶ 4,000m<sup>2</sup> of lawns
- ▶ 8,500m<sup>2</sup> of garden bed
- ▶ planting of 30,000 drought tolerant plants
- ▶ lighting and electrical works
- ▶ drainage
- ▶ environmental management throughout construction, which is particularly important



## GREVILLE STREET URBAN REALM IMPROVEMENT STAGES 2, 3 & 4

### Stonnington City Council



3.5M



Prahran,  
VIC

The objective of the Council's improvement works to Greville Street was to create a better environment for the local community, businesses, and visitors to enjoy.

As head contractor, ACE's scope of works included:

- ▶ Reconstruction of roadway through Greville Street
- ▶ Granite set paving throughout shared traffic zones with bluestone paving to footpaths
- ▶ Catenary lighting and upgraded public Lighting (undertaken by Ace Electrical Infrastructure Pty Ltd)
- ▶ Street trees and garden beds
- ▶ Street furniture installation



## COWES JETTY TRIANGLE

## Bass Coast Shire Council



2M

**Phillip Island,  
VIC**

As part of the Phillip Island Cowes Revitalisation Project, ACE undertook the redevelopment of the Jetty Triangle. ACE's scope for this design and construction project included demolition of the existing facilities, installation of terraced, grassed areas for community events, new pathways and landscaping. Accessibility for all persons was a significant feature of the project. ACE was pleased to be part of this exciting project that helped enhance the infrastructure for the local community.

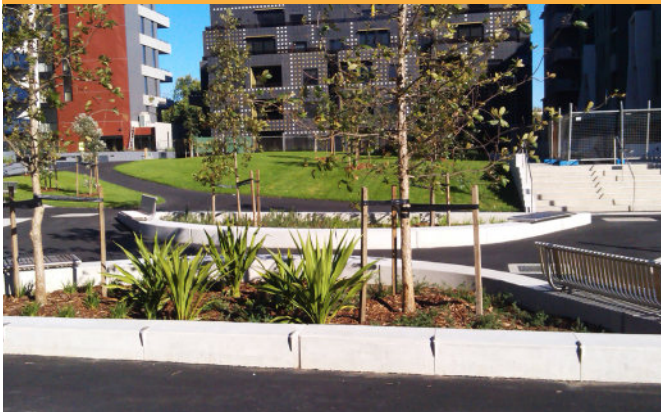
The project aimed to provide:

- ▶ Activation of the link between Thompson Avenue and the foreshore
- ▶ A versatile, grassed Village Green area with level areas for community markets and major events
- ▶ Sitting terraces and steps to existing cenotaph wall
- ▶ Provision of DDA compliant access pathways from the Esplanade to the jetty
- ▶ Provision of a children's play space
- ▶ Preservation of the existing historical rotunda, with new stone paving around the structure



## LIVING CARLTON STAGES 2, 3 &amp; 4

## HACER GROUP PTY LTD



2M

Carlton,  
VIC

Living Carlton is a master planned, environmentally sustainable redevelopment that included the integration of both social and private housing. The redevelopment included new public parks, a community garden, and pedestrian and bicycle pathways. Development of three inner city sites in Carlton covering an area of 7.5 hectares, comprised of 9 stages with a total of 246 social housing apartments and more than 800 private apartments, a 160 bed aged care facility and approximately 180 independent living units with a total end value of \$500M.

Ace was subcontracted for stages 2, 3 and 4 landscaping and civil works.

The scope of works included:

- ▶ Construction of a rain garden, including insitu retaining wall, rock work and drainage layers
- ▶ Supply & installation of exposed aggregate concrete on slab and on grade, in 2 mix designs
- ▶ Supply & installation of drainage cell to raised garden beds
- ▶ Supply & installation of garden bed medium
- ▶ Supply & installation of irrigation system to all common areas
- ▶ Supply & installation of numerous types of rock mulch & ballast across the project
- ▶ Supply & installation of a new vehicle access, including bluestone kerb, channel & edging, asphalt drive way, etc
- ▶ Supply and planting of trees and plants
- ▶ Supply & installation of bench seating



## WALTER ELIZA HALL INSTITUTE EARLY CHILDHOOD CENTRE

### KANE CONSTRUCTIONS PTY LTD



**900K**



**Parkville,  
VIC**

ACE completed the WEHI (aka Walter Eliza Hall Institute) Child Care Centre in Parkville for KANE Constructions. The 5 level centre caters for combined activities including the childcare itself as well as health and consultation services.

As well as the play areas, the ACE Landscape team also did the external hardscape and carpark for the centre. A great job by all and what an extremely lucky group of kids who get to play here!

Our scope for the project included:

- ▶ Paving
- ▶ Planter Boxes
- ▶ Decking
- ▶ Interactive planting
- ▶ Irrigation systems
- ▶ Play equipment - sand pits, swing, water play area
- ▶ Rubber softfall and sythetic turf





**ACE LANDSCAPE SERVICES PTY LTD**

**11 -13 Moncrief Road  
Nunawading  
Vic 3131**

**Ph: (03)94313944  
Fax: (03)94313842  
[www.acecon.com.au](http://www.acecon.com.au)  
[info@acecon.com.au](mailto:info@acecon.com.au)**